

19550—93
5970—79)

(

9—92/947

1

,

2

21

1993 *

:

3

5970—79 « ».

.

1—6

»

4

19550—86

()

, 1994

^

*

19550—93
(5970—79)

684.442.45:006.354

Desks for foreign language studies.
Types and functional dimensions

56 0000

1995—01—01

(11016).

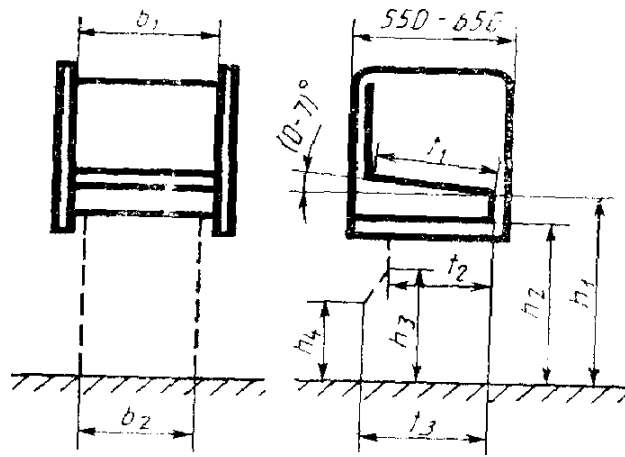
, 2.

1

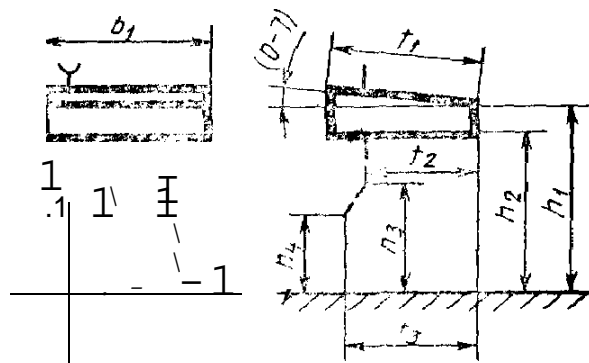
1.1

I —
II —

(. 1);
(, 2).



.1



.2

1.2

I II

2

2.1

1.

1	1050	. 1000 1150
2	1200	» 1150 » 1300
3	13510	* 1300 » 1450
4	1500	» 1450 » 1600
5	1650	» 1600 * 1750
6	1800	> 1750

		1	2	3	4	5	6
h_x	-	460	520	580	640	700	760
h_{2r}	(350	410	470	530	590	650
h_3	,	350	350	400	400	450	500
h_j	(250	250	300	300	350	350
t_u	-	500	500	500	500	500	500
$/_2>$	(300	300	300	350	400	400
£_3	,	400	400	400	400	450	450
	(600	600	600	600	600	600
	,	420	420	420	420	450	450

.4 19550—03

2.2

.1 2.

2.2.1

700 .

2.3

200X200X80 .

350

2.4

)

10—30 .

(

-
2

-

-

-

684.442.45:006.354

25

:

, ,

56 0000

. . .
. . .
. . .

26.05.94. , , 22.06.94. . . 0,47. . - . 0,47.
. - , . 0,23. , 307 . 1449.

*3 » , 107076, . , 25G. . 1063,, 14.